

SCY SERIES DRUM PRE-CLEANER

OPERATION MANUAL



江苏中天农牧机械有限公司

JIANGSU ZHONGTIAN AGRO MACHINERY CO.,LTD

Important instruction:

1 This manual detailedly describes SCY series pre-cleaner of each system structure, function and use and maintenance method. Before installation and use of the machine , customer should read the manual,and have a full understanding of the ministries and its structure and function ,then have operation and maintenance of the machine. Due to the continuous improvement of product structure, after a certain time period, the manual of narrative content and the actual situation of the products will have small changes.Users should pay attention to it.

2 Please propose your advice to us for melioration when finding quality problem or others.Thanks !

I . APPLICABLE SCOPE AND PERFORMANCE FEATURE

1. Applicable Scope:

SCY series drum sieve is applicable to the raw material intake section in the industries of flour mill, feed mill, grain silo etc. Similar to the function of other dry cleaning equipments, is mainly for the sieving of large impurity, e.g. paddy, straw, string, paper, soil block, corn leave, corn cob etc. waste, to prevent the downstream machines, conveying elements from getting trouble or damaged.

2. Performance Feature:

This machine is of high capacity, low power consumption, simple structure, less space occupation, less maintenance, simple installation, and convenient replacement of sieving drum. According to product characteristics, by adopting appropriate sieve hole size, could realize the sieving effect satisfying the required capacity.

II . MAIN TECHNICAL PARAMETERS

1. Drum dimension (mm)	φ500*640
2. Drum rotation speed (rpm)	28
3. Motor and reducer model	BWD10-35-0.5
4. Capacity (t/h)	5-10
5. Aspiration volume (m ³ /min)	8
6. Outline dimension (mm)	1325*620*900

III. MAIN STRUCTURE AND WORKING PRINCIPLE

The main structure of drum sieve, see Figure 1: cycloidal pin wheel reducer (1), chain shell (2), machine body (3), transmission shaft (4), drum (5), inlet hopper (6), access door (7), cleaning brush (8), motor (9), coupling (10) etc.

When working, raw material comes in from the inlet (210*110) through hopper (6) and go inside the drum sieve, with the rotating of drum, the through products goes out from outlet (450*200), the large impurity is guided to the impurity outlet by the guiding screw on the internal surface of drum under the force of rotation, and discharged out of the machine from the large impurity outlet (200*200). The guiding screw can not only helping discharge the large impurity out of machine, can also prevent the raw material from flowing out with the through products.

Aspiration port (φ150) could be connected with central aspiration system, to avoid dust going out; the brush (8) is for cleaning sieve, avoiding the sieve hole from being blocked. The drum is driven by reducer through a series of sprocket wheel.

IV. INSTALLATION

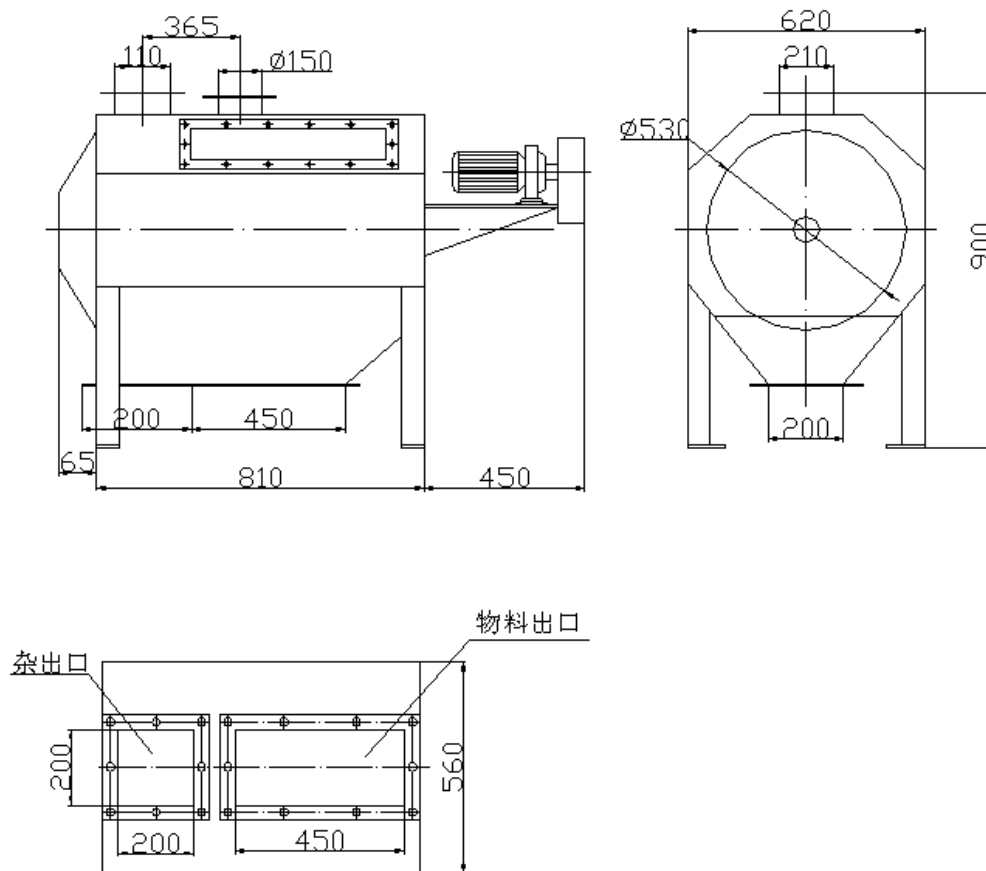
An overall check to the machine should be done before installation, must ensure the output shaft of worm reducer and the transmission shaft are parallel, the center line of two transmission sprocket wheel should be aligned and the tension of chain is moderate. The installation method, anchor bolt position, and the outlet position of grain and large impurity see Figure 2 installation sketch.

V . USE, OPERATION AND CAUTION

1. The operator should know the structure of this machine, and be familiar with the performance of machine.
2. Unloaded test run before using should be done first, the rotation direction of drum should be same as that on the indication plate. Check each connection part; there should be no loose part and abnormal noise of blocking, bumping and scraping etc.
3. Only can let raw material in after the unloaded running is normal, the inlet flow rate should be even and appropriate.
4. If finding abnormality in the running process of machine, stop the machine immediately and find the cause, restart the machine after the problem is solved.
5. The machine is not allowed to work overloaded, stop feeding before stop the machine, only when the product inside is sieved completely then can power off the machine.

VI. MAINTENANCE

1. The drum could be rotating smoothly, no axial move.
2. Lubricate the reducer before using, replace the lube after half month using of new machine, then replace lube once every 6 months.
3. Drum, liner plate and cleaning brush should be replaced immediately after wearing to unable work normally.
4. Necessary checking and cleaning work should regularly be done before and after every shift.



50 drum sieve installation sketch



江苏中天农牧机械有限公司

JIANGSU ZHONGTIAN AGRO MACHINERY CO.,LTD

ADD: No.7 ZhongDaLi Road, New industrial Park,
DaiBu Town, LiYang, JiangSu, China.

P C: 213300

Tel: 13814760009

Fax: 0086-519-87256670

[Http://www.jsztmt.com](http://www.jsztmt.com)

E-mail: info@jsztmt.com